

# ENCODE DCC Antibody Validation Document

Date of Submission

Name:

Email:

Lab

Antibody Name:

Target:

Company/  
Source:

Catalog Number, database ID, laboratory

Lot Number

Antibody Description:

Target Description:

Species Target

Species Host

Validation Method #1

Validation Method #2

Purification Method

Polyclonal/  
Monoclonal

Vendor URL:

Reference (PI/  
Publication  
Information)

Please complete the following for antibodies to histone modifications:  
if your specifications are not listed in the drop-down box,  
please write-in the appropriate information

Histone Name  AA modified  AA Position  Modification

Immunoprecipitation of CH12 and MEL nuclear extracts using anti-Mxi antibody (AF4185) efficiently enriched a single band of the expected molecular weight of Mxi (~35 kD).

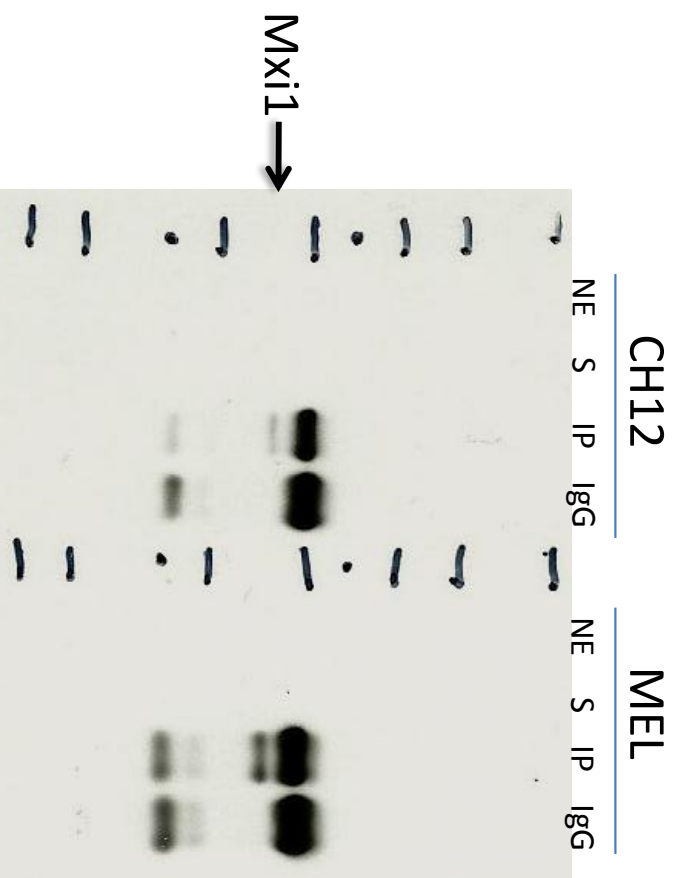
Validation #1  
Analysis

Insert Validation Image (click here)

**Antibody: Mxi-1 Source:** AF4185 AF4185

**Epitope:** Mxi-1 antibody was produced in a goat immunized with purified, *E. coli*-derived, recombinant human Mxi1 aa 81 - 228

### Validation 1: Immunoprecipitation (IP) in both CH12 and MEL cell lines



Arrow indicates immunoprecipitated band of expected size of Mxi-1 in both CH12 and MEL cell lines (~35 kDa).

NE: nuclear extract

S: supernatant after IP

IP: IP with tested antibody

IgG: IP with control IgG

AF4185 has been validated by IP-Mass Spec in K562 cells. See validation documents submitted for human cell lines for details.

Validation #2  
Analysis

Insert Validation Image (Click here)

Submit by Email