

Broad Institute - Encode3 Secondary Antibody Validation

Active Motif #39731, lot 471001

Target: SAP30

Approved name: Sin3A associated protein 30

Function: Contributes to the deacetylation of lysines on the N-terminal part of the core histones, H2A, H2B, H3 and K4, associated with the establishment of a repressive chromatin environment.

Member of complex: SAP30 is a member of the Sin3A histone deacetylase complex.

Reference: Mol Cell. 1998 1:1021-31. SAP30, a novel protein conserved between human and yeast, is a component of a histone deacetylase complex. Zhang Y, Sun ZW, Iratni R, Erdjument-Bromage H, Tempst P, Hampsey M, Reinberg D. [PMID: 9651585](https://pubmed.ncbi.nlm.nih.gov/9651585/)

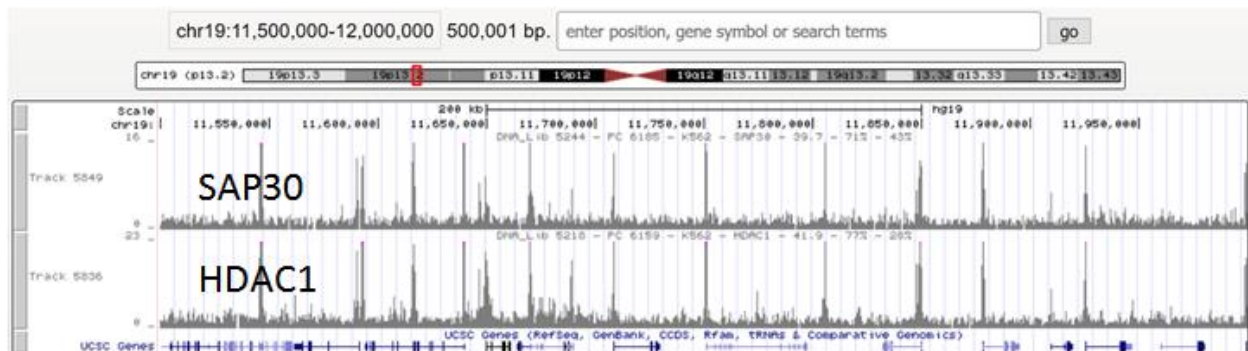
Other complex members: HDAC1, HDAC2, Sin3A

Antibody being validated:

1. Active Motif # 39731 Lot 471001 (rabbit polyclonal)
2. Broad Alias: PchAb 164-V
3. Immunogen: Recombinant full length human protein.
4. <https://www.encodeproject.org/antibodies/ENCAB000AKO/>

This validation relies on the use of antibodies to different members of a known complex, in K562 cells, and the demonstration that highly similar patterns of enrichment are obtained with each antibody. The second track shown used an antibody to HDAC1 (PchAb 134-V), another member of the Sin3a complex.

Overall correlation score: 0.9303



Antibody being compared:

1. Santa Cruz #sc6298X Lot H0509 (goat polyclonal)
2. Broad Alias: PchAb 134-V
3. Immunogen: C-terminal peptide of human origin
4. <https://www.encodeproject.org/antibodies/ENCAB649LYF/>