

ENCODE DCC Antibody Validation Document

Date of Submission

Name:

Email:

Lab

Antibody Name:

Target:

Company/
Source:

Catalog Number, database ID, laboratory

Lot Number

Antibody Description:

Target Description:

Species Target

Species Host

Validation Method #1

Validation Method #2

Purification Method

Polyclonal/
Monoclonal

Vendor URL:

Reference (PI/
Publication
Information)

Please complete the following for antibodies to histone modifications:
if your specifications are not listed in the drop-down box,
please write-in the appropriate information

Histone Name AA modified AA Position Modification

A band consistent with the expected size of SMC3 (~145 kD) is efficiently immunoprecipitated from a CH12 and MEL nuclear lysate using antibody ab9263. This antibody has been validated for human cell lines using Immunoprecipitation and CHIP.

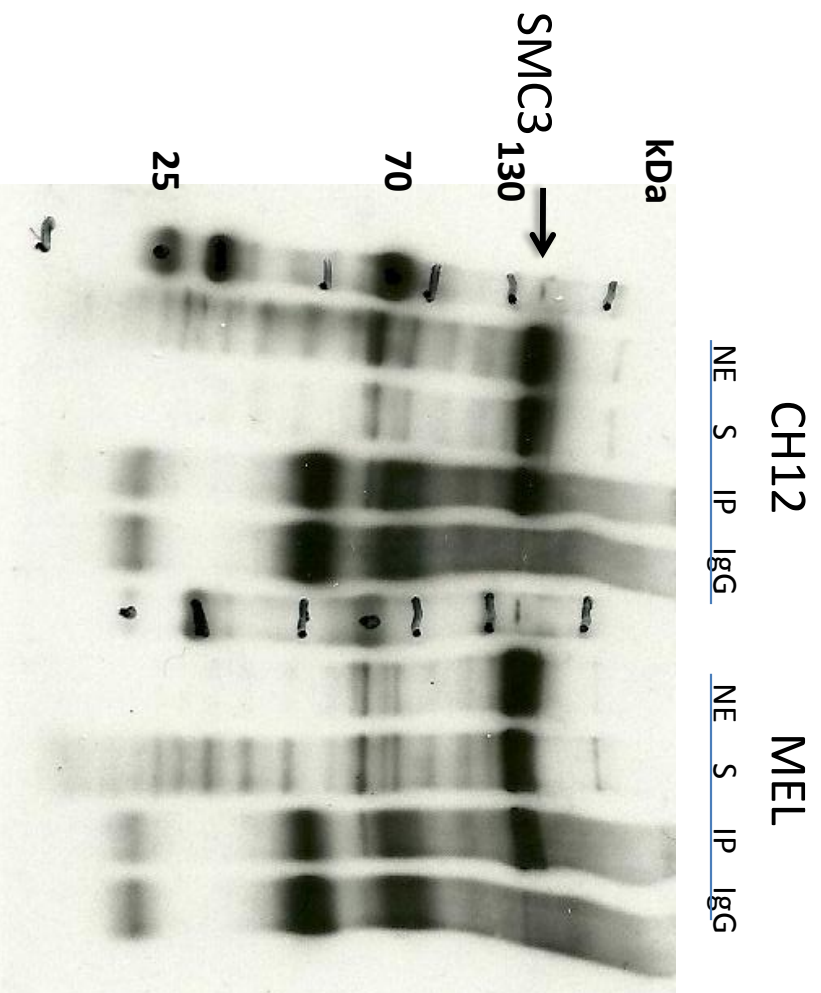
Validation #1
Analysis

Insert Validation Image (click here)

Antibody: SMC3 Source: Abcam ab9263

Epitope: NELF-E Antibody is rabbit polyclonal IgG, epitope corresponding to last 100 amino acids of the human SMC3

Validation 1: Immunoprecipitation (IP) in both CH12 and MEL cell lines



Arrow indicates immunoprecipitated band of expected size of SMC3 in both CH12 and MEL cell lines (~145 kDa).

NE: nuclear extract

S: supernatant after IP

IP: IP with tested antibody

IgG: IP with control IgG

The antibody ab9263 has been validated by ChIP-Seq for human cell lines. Please see validation documents for human cell lines for details.

Validation #2
Analysis

Insert Validation Image (Click here)