

H3K27me3_ Thermo Fisher _Part: MA533081 _Lot: VB2948733 _WB_PchAb 1426

Test Date_User 2-2-21_RI

Protein Load:

Panel A

1-Novex ps protein stds 15ul
2-K562 NE 15ug

Primary antibody:

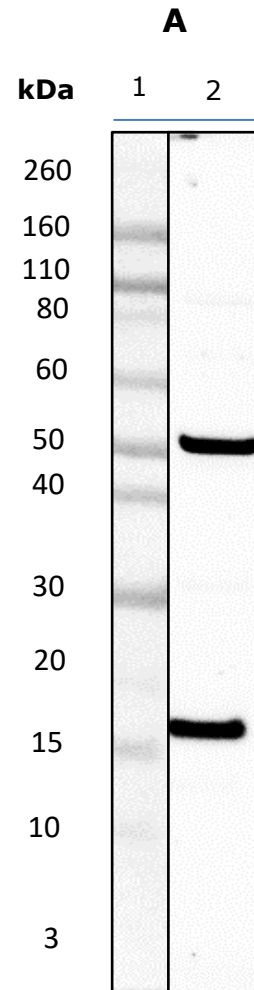
Panel A

Epitope: H3K27me3
Vendor: Thermo Fisher
Part number: MA533081
Lot number: VB2948733
Primary ab dilution: 1:750
Incubation: O/N at 4C

Secondary antibody:

Vendor: Abcam
Part number: ab6721
Lot number: GR119224-3
Secondary ab dilution: 1:5000
Incubation: 1 hr@ RT

Protein Standard Novex ps protein standard 15ul



← expected size ~ 17 kDa

Gel and Blot Conditions:

4-12% Bis-Tris, 1X MES running buffer iBlot transfer, nitrocellulose, P3 for 7'
Blocked in TBS-T w/5% NFDM for 1hr @ RT
Antibodies diluted in TBS-T w/5% NFDM , Expose in ChemiDoc