

ENCODE DCC Antibody Validation Document

Date of Submission

Name:

Email:

Lab

Antibody Name:

Target:

Company/
Source:

Catalog Number, database ID, laboratory

Lot Number

Antibody
Description:

Target
Description:

Species Target

Species Host

Validation Method #1

Validation Method #2

Purification
Method

Polyclonal/
Monoclonal

Vendor URL:

Reference (PI/
Publication
Information)

Please complete the following for antibodies to histone modifications:
*if your specifications are not listed in the drop-down box,
please write-in the appropriate information*

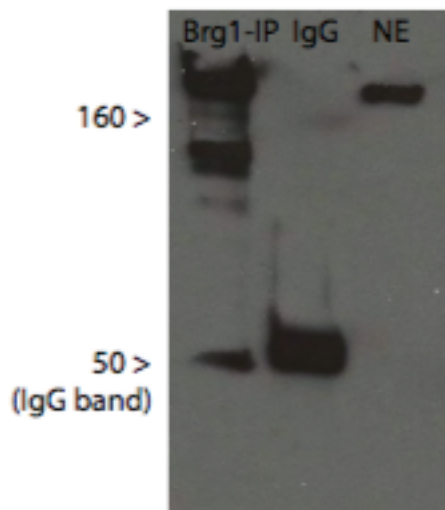
Histone Name

AA modified

AA Position

Modification

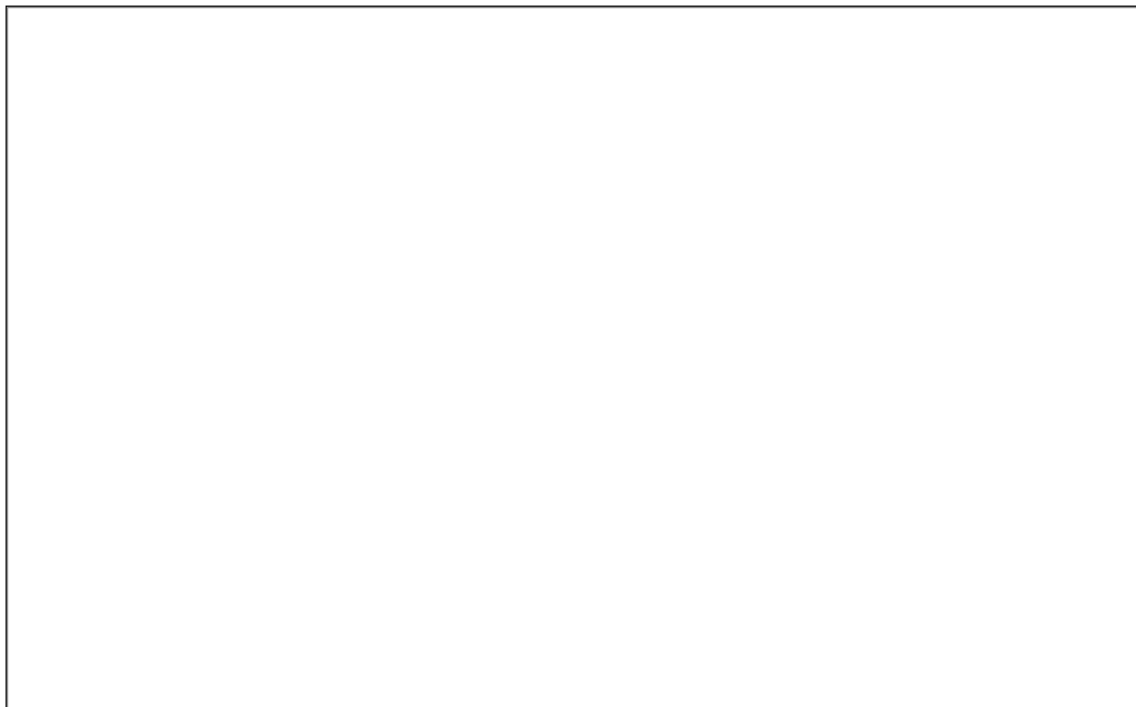
Validation #1
Analysis



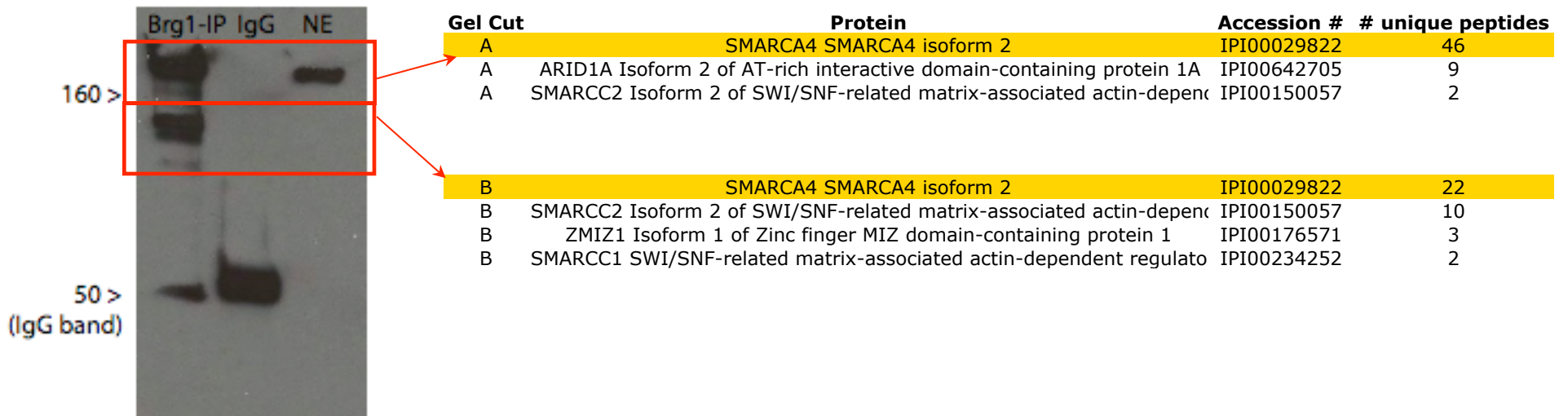
NE = total nuclear extract has a single band for Brg1
Brg1 IP shows some degradation.
IgG = IP with non-specific mouse antibody
IP and immunoblot used the same antibody:
Brg1 (G-7) Santa Cruz sc-17796 (mouse)
IP was performed with nuclear extract from HeLaS3 cells

Insert Validation Image (click here)

Validation #2
Analysis



Insert Validation Image (Click here)



NE = total nuclear extract has a single band for Brg1
 Brg1 IP shows some degradation.
 IgG = IP with non-specific mouse antibody
 IP and immunoblot used the same antibody:
 Brg1 (G-7) Santa Cruz sc-17796 (mouse)
 IP was performed with nuclear extract from HeLaS3 cells