

ENCODE DCC Antibody Validation Document

Date of Submission

Name:

Email:

Lab

Antibody Name:

Target:

Company/
Source:

Catalog Number, database ID, laboratory

Lot Number

Antibody
Description:

Target
Description:

Species Target

Species Host

Validation Method #1

Validation Method #2

Purification
Method

Polyclonal/
Monoclonal

Vendor URL:

Reference (PI/
Publication
Information)

Please complete the following for antibodies to histone modifications:
*if your specifications are not listed in the drop-down box,
please write-in the appropriate information*

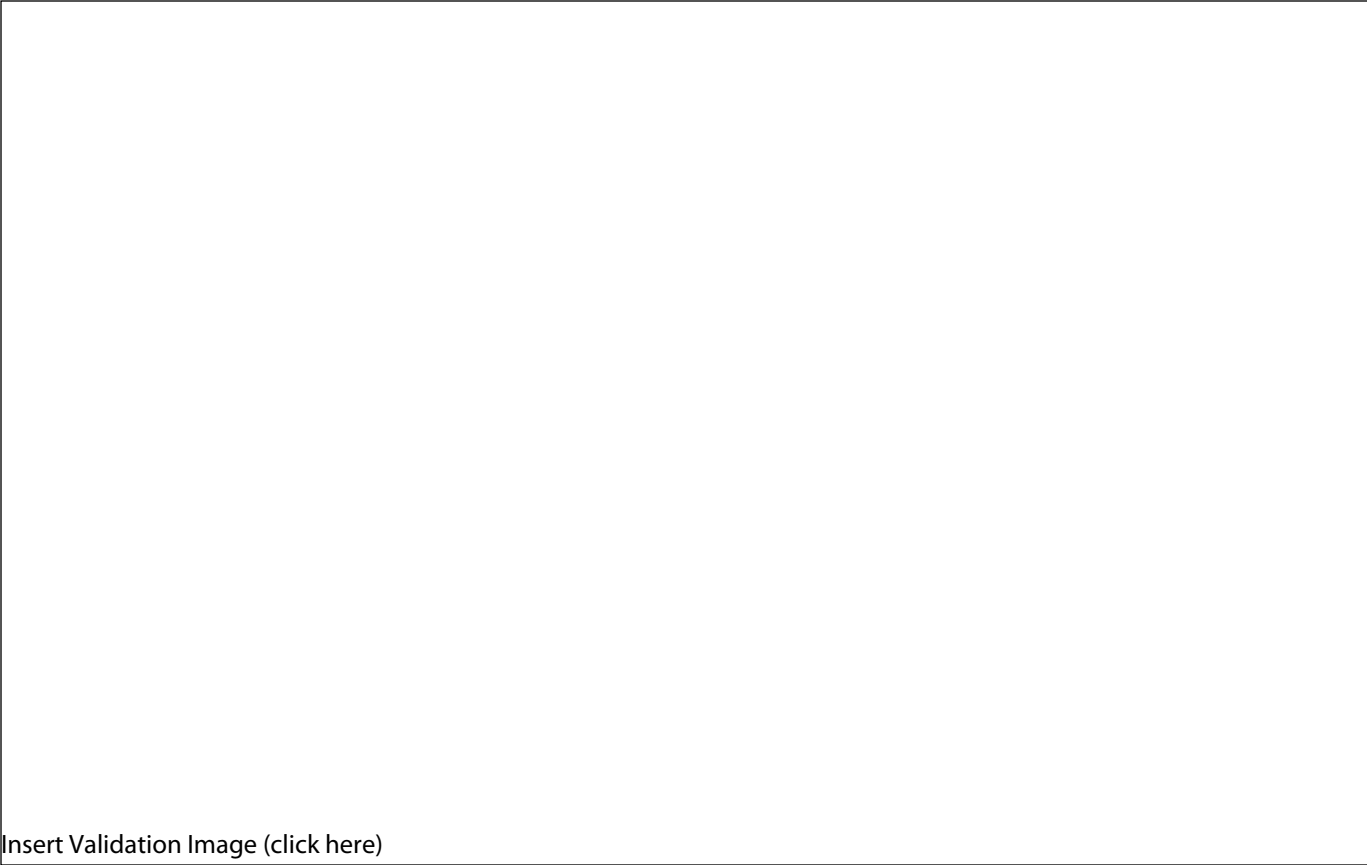
Histone Name

AA modified

AA Position

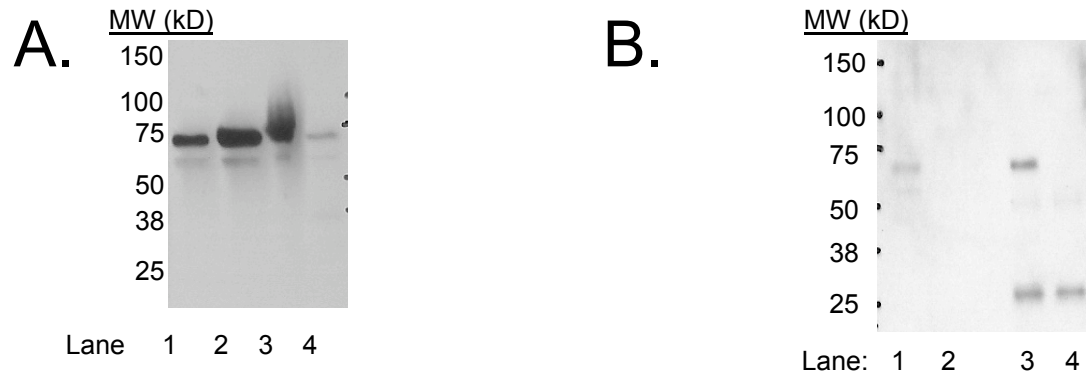
Modification

Validation #1
Analysis



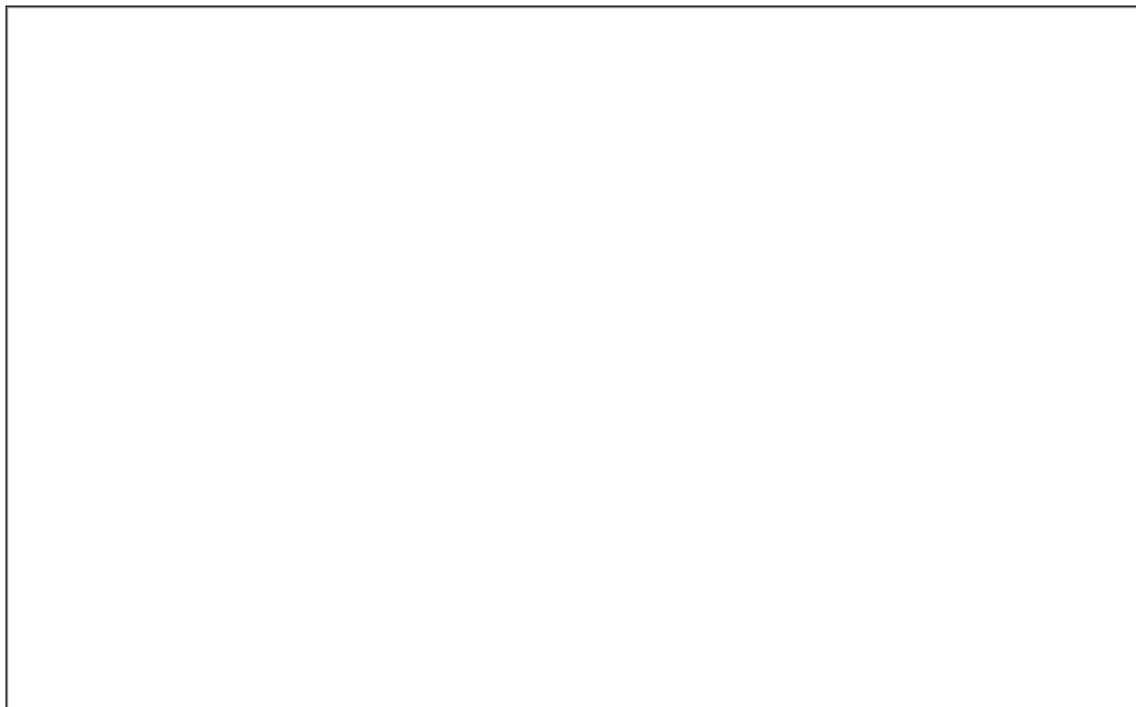
Insert Validation Image (click here)

Antibody 1277-1 (ELK1) Immunoblot/ immunoprecipitation



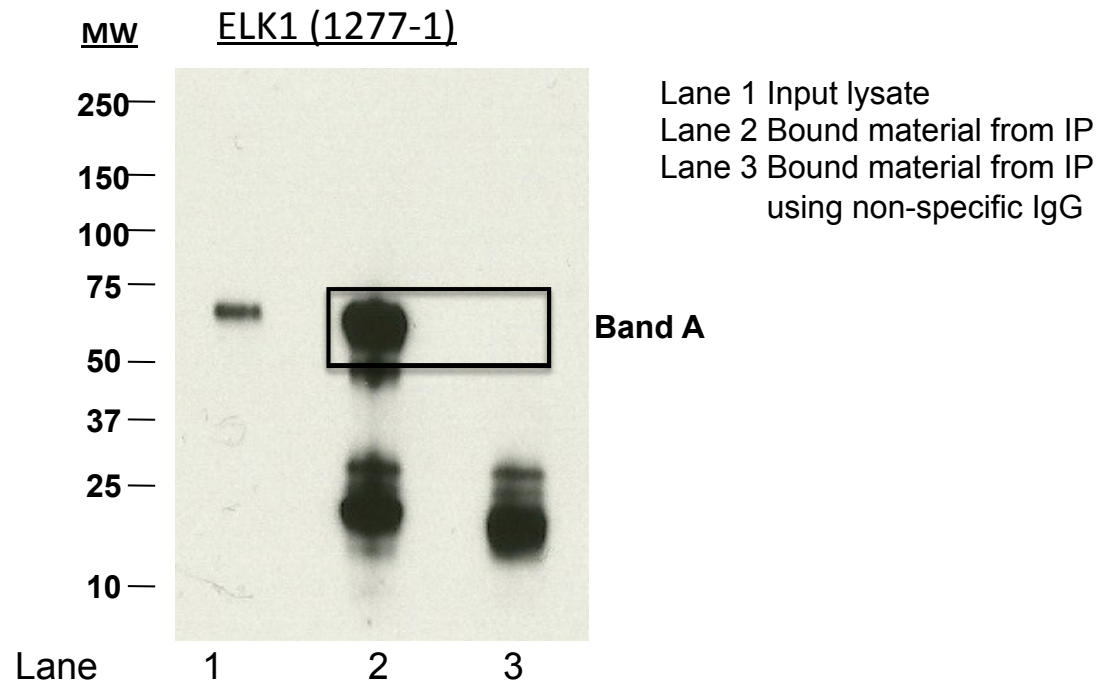
A. Western blot using 1277-1. Lanes contain nuclear lysates from GM12878 cells (Lane 1), K562 cells (Lane 2), HeLa S3 cells (Lane 3), and HepG2 cells (Lane 4). **B.** Immunoprecipitation of ELK1 from K562 cells using 1277-1. Lane 1: input nuclear lysate, Lane 2: unbound material from immunoprecipitation with AF4185, Lane 3: material immunoprecipitated with 1277-1, Lane 4: material immunoprecipitated using control IgG.

Validation #2
Analysis



Insert Validation Image (Click here)

1277-1 (ELK1) Immunoprecipitation/ Mass spectrometry



Spectrum	Name of Protein	Peptide count	Ratio(ELK1/IgG control)
ELK1_Band A	Isoform 1 of Serum albumin	9	4.5
ELK1_Band A	Heat shock 70 kDa protein 1A/1B	6	NOT IN CONTROL IP
ELK1_Band A	Tubulin, beta	6	1
ELK1_Band A	Interleukin enhancer-binding factor 2	5	0.625
ELK1_Band A	Isoform 1 of ETS domain-containing protein Elk-1	5	NOT IN CONTROL IP
ELK1_Band A	Putative uncharacterized protein	5	NOT IN CONTROL IP
ELK1_Band A	Alpha-2-macroglobulin	4	NOT IN CONTROL IP
ELK1_Band A	cDNA FLJ54533, highly similar to Heterogeneous nuclear ribonucleoprotein H	4	0.571428571
ELK1_Band A	Elongation factor 1-alpha 1	4	4
ELK1_Band A	Protein S100-A9	4	NOT IN CONTROL IP
ELK1_Band A	cDNA FLJ53910, highly similar to Keratin, type II cytoskeletal 6A	3	0.214285714
ELK1_Band A	cDNA FLJ55805, highly similar to Keratin, type II cytoskeletal 4	3	3
ELK1_Band A	cDNA FLJ60647, highly similar to Keratin, type II cytoskeletal 6B	3	0.3
ELK1_Band A	Eukaryotic initiation factor 4A-III	3	0.75
ELK1_Band A	Heat shock 70kDa protein 1-like variant	3	NOT IN CONTROL IP
ELK1_Band A	Hemopexin	3	NOT IN CONTROL IP
ELK1_Band A	Heterogeneous nuclear ribonucleoprotein G	3	1
ELK1_Band A	Heterogeneous nuclear ribonucleoprotein K	3	0.75
ELK1_Band A	Isoform 1 of Alpha-1-antichymotrypsin	3	NOT IN CONTROL IP
ELK1_Band A	Isoform 1 of Alpha-1-antitrypsin	3	NOT IN CONTROL IP
ELK1_Band A	Isoform 2 of Keratin, type II cytoskeletal 80	3	3
ELK1_Band A	Isoform 3 of Glial fibrillary acidic protein	3	3
ELK1_Band A	Keratin, type II cytoskeletal 8	3	0.75
ELK1_Band A	TUBA1B protein	3	0.75
ELK1_Band A	cDNA FLJ50996, highly similar to 60S ribosomal protein L4	2	NOT IN CONTROL IP
ELK1_Band A	Heterogeneous nuclear ribonucleoprotein F	2	0.333333333
ELK1_Band A	Isoform 3 of Keratin, type I cytoskeletal 13	2	0.666666667
ELK1_Band A	Peptidyl-prolyl cis-trans isomerase FKBP4	2	NOT IN CONTROL IP

ELK1_Band A	Polymeric immunoglobulin receptor	2	NOT IN CONTROL IP
ELK1_Band A	Ribosome biogenesis regulatory protein homolog	2	0.5
ELK1_Band A	TDP43	2	1
ELK1_Band A	U3 small nucleolar RNA-associated protein 15 homolog	2	1