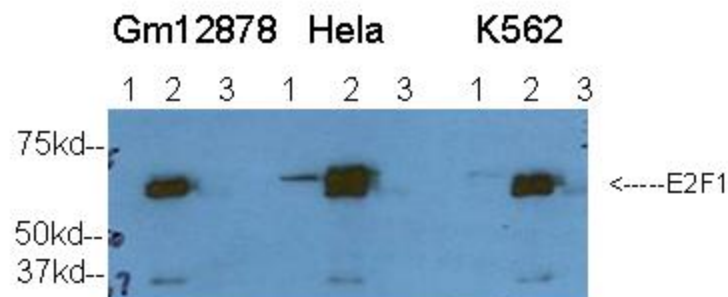
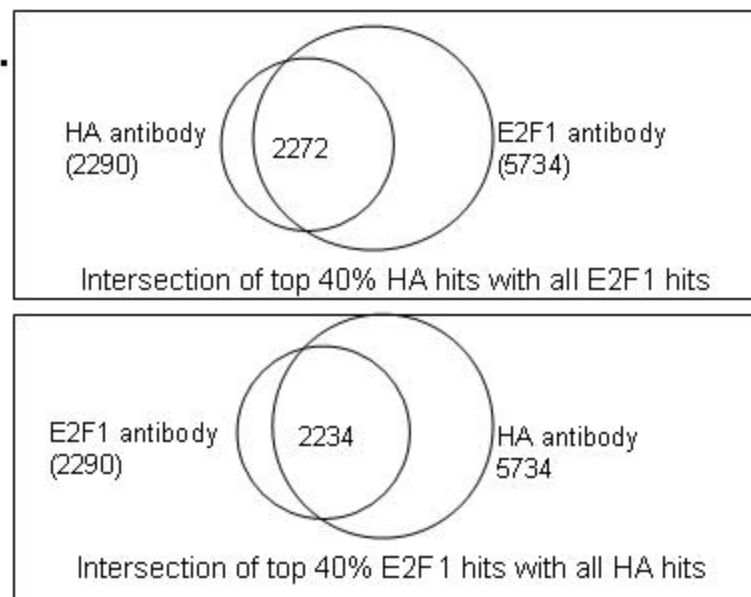


Farnham lab @ UC Davis  
E2F1 (**GeneID 1869**) antibody validation

**A.**



**B.**



E2F1 antibody: Upstate , Anti\_E2F1, clones KH20&KH95 , Cat# 05-379.

HA antibody:HA.11 Clone 16B12 Monoclonal antibody, Purified. Cat# MMS-101P

Validation of the E2F1 antibody.

- A. An IP western was performed using GM12878, HeLa and K562 nuclear extract. For each extract, lane 1 is nuclear extract, lane 2 is the immunoprecipitated sample, and lane 3 is the sample immunoprecipitated with a control rabbit IgG. Due to the extremely low level of E2F1 in most cells, it is hard to detect by western prior to IP. However, for all three cell types, the E2F1 antibody immunoprecipitated one major band of the right size that was not precipitated by a control rabbit IgG.
- B. ChIPseq was performed in HeLa cells stably transfected with a plasmid expressing an HA tagged E2F1 protein. Two different biological replicates of HeLa cells were used; one sample was ChIPPed using the HA antibody and the other sample was ChIPPed using the E2F1 antibody. The antibodies showed very similar ChIPseq profiles: 99% of the top 40% of targets identified with the HA antibody are in the targets identified using the E2F1 antibody and 97.5% of the top 40% of targets identified using the E2F1 antibody are in the targets identified using the HA antibody.