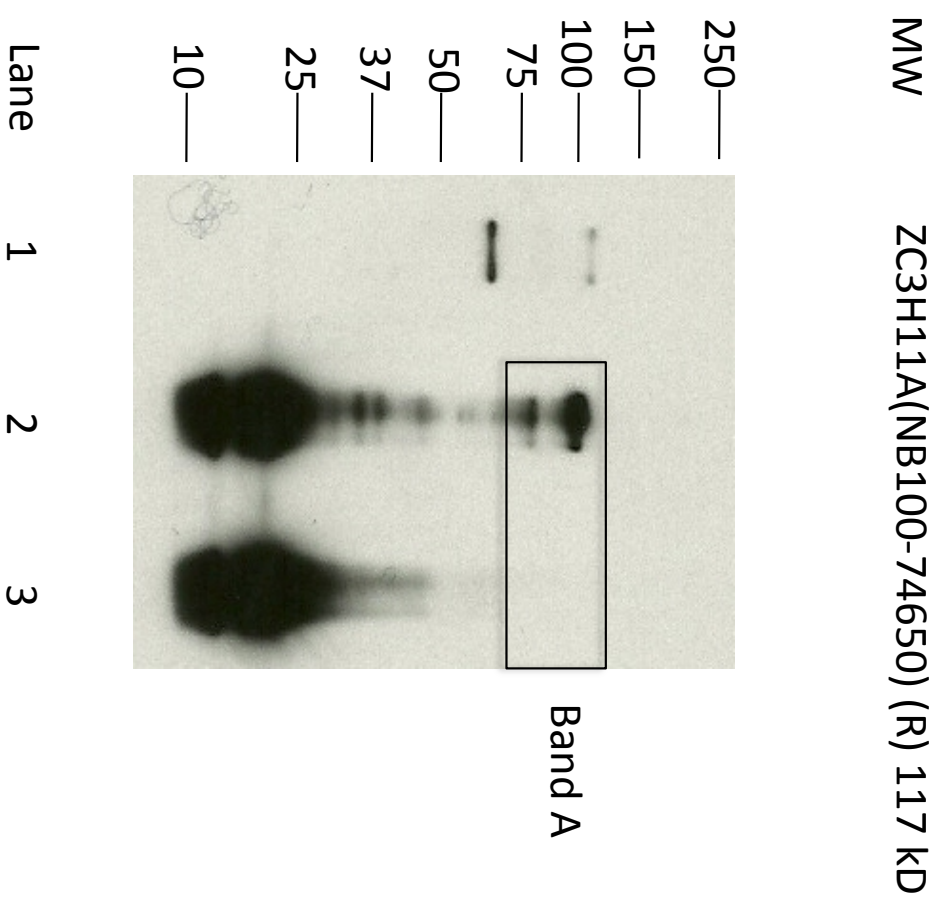


Immunoprecipitation assay (IP) + mass spectrometry assay



Lane 1 Input lysate

Lane 2 Bound material from IP

Lane 3 Bound material from IP
using non-specific IgG

Spectrum	Name of Protein	Count of peptides	Ratio(ZC3H11A/IgG Control)
ZC3H11A_Band A	Zinc finger CCCH domain-containing protein 11A	242	NOT IN CONTROL IP
ZC3H11A_Band A	Isoform A of Lamin-A/C	78	NOT IN CONTROL IP
ZC3H11A_Band A	Isoform 5 of Interleukin enhancer-binding factor 3	38	NOT IN CONTROL IP
ZC3H11A_Band A	Stress-70 protein, mitochondrial	38	NOT IN CONTROL IP
ZC3H11A_Band A	ATP-dependent RNA helicase A	34	NOT IN CONTROL IP
ZC3H11A_Band A	Isoform 3 of Peroxisomal targeting signal 1 receptor	34	NOT IN CONTROL IP
ZC3H11A_Band A	Isoform 2 of Heterogeneous nuclear ribonucleoprotein M	32	NOT IN CONTROL IP
ZC3H11A_Band A	Isoform 1 of Heterogeneous nuclear ribonucleoprotein R	31	NOT IN CONTROL IP
ZC3H11A_Band A	cDNA FLJ59357, highly similar to Probable ATP-dependent RNA helicase DDX5	29	NOT IN CONTROL IP
ZC3H11A_Band A	E3 ubiquitin/ISG15 ligase TRIM25	28	NOT IN CONTROL IP
ZC3H11A_Band A	insulin-like growth factor 2 mRNA-binding protein 1 isoform 2	26	NOT IN CONTROL IP
ZC3H11A_Band A	Nucleolar protein 56	25	NOT IN CONTROL IP
ZC3H11A_Band A	THO complex subunit 5 homolog	25	NOT IN CONTROL IP
ZC3H11A_Band A	Isoform 2 of Polyadenylate-binding protein 1	22	NOT IN CONTROL IP
ZC3H11A_Band A	Lamin-B1	18	NOT IN CONTROL IP
ZC3H11A_Band A	cDNA FLJ58652, highly similar to Probable ATP-dependent RNA helicase DDX17	17	NOT IN CONTROL IP
ZC3H11A_Band A	HSPA5 protein	16	NOT IN CONTROL IP
ZC3H11A_Band A	Isoform 1 of RNA-binding protein 14	16	NOT IN CONTROL IP
ZC3H11A_Band A	cDNA FLJ54020, highly similar to Heterogeneous nuclear ribonucleoprotein U	15	NOT IN CONTROL IP
ZC3H11A_Band A	Nucleolar GTP-binding protein 1	15	NOT IN CONTROL IP
ZC3H11A_Band A	Isoform 1 of Insulin-like growth factor 2 mRNA-binding protein 3	13	NOT IN CONTROL IP
ZC3H11A_Band A	X-ray repair complementing defective repair in Chinese hamster cells 6	13	NOT IN CONTROL IP
ZC3H11A_Band A	Isoform DPII of Desmoplakin	12	NOT IN CONTROL IP
ZC3H11A_Band A	Poly(A) binding protein, cytoplasmic 4 (Inducible form), isoform CRA_e	12	NOT IN CONTROL IP
ZC3H11A_Band A	Putative pre-mRNA-splicing factor ATP-dependent RNA helicase DHX15	12	NOT IN CONTROL IP
ZC3H11A_Band A	SYNCRIP protein (Fragment)	12	NOT IN CONTROL IP
ZC3H11A_Band A	WD repeat-containing protein 46	12	NOT IN CONTROL IP
ZC3H11A_Band A	cDNA FLJ54408, highly similar to Heat shock 70 kDa protein 1	11	NOT IN CONTROL IP
ZC3H11A_Band A	Crooked neck pre-mRNA splicing factor-like 1	11	NOT IN CONTROL IP
ZC3H11A_Band A	Isoform 1 of Nucleolar RNA helicase 2	11	NOT IN CONTROL IP
ZC3H11A_Band A	Isoform 2 of Protein LAS1 homolog	11	NOT IN CONTROL IP
ZC3H11A_Band A	Nucleolar protein 11	11	NOT IN CONTROL IP
ZC3H11A_Band A	Pre-mRNA-processing factor 6	11	NOT IN CONTROL IP
ZC3H11A_Band A	Splicing factor 3A subunit 1	11	NOT IN CONTROL IP
ZC3H11A_Band A	heterogeneous nuclear ribonucleoprotein L isoform b	10	NOT IN CONTROL IP
ZC3H11A_Band A	Isoform Short of TATA-binding protein-associated factor 2N	9	NOT IN CONTROL IP
ZC3H11A_Band A	Seipin	9	NOT IN CONTROL IP
ZC3H11A_Band A	Calcium-binding mitochondrial carrier protein Aralar2	7	NOT IN CONTROL IP
ZC3H11A_Band A	cDNA FLJ51295, highly similar to Cell division cycle 5-like protein	7	NOT IN CONTROL IP
ZC3H11A_Band A	Isoform 1 of Splicing factor 3B subunit 3	7	NOT IN CONTROL IP
ZC3H11A_Band A	Isoform 2 of Putative ribosomal RNA methyltransferase NOP2	7	NOT IN CONTROL IP
ZC3H11A_Band A	Nuclear pore complex protein Nup205	7	NOT IN CONTROL IP
ZC3H11A_Band A	ATP-dependent RNA helicase DDX18	6	NOT IN CONTROL IP
ZC3H11A_Band A	Desmoglein-1	6	NOT IN CONTROL IP
ZC3H11A_Band A	Isoform 7 of Zinc finger CCCH domain-containing protein 14	6	NOT IN CONTROL IP
ZC3H11A_Band A	Isoform UBF2 of Nucleolar transcription factor 1	6	NOT IN CONTROL IP
ZC3H11A_Band A	THO complex subunit 2	6	NOT IN CONTROL IP
ZC3H11A_Band A	WD repeat-containing protein 36	6	NOT IN CONTROL IP
ZC3H11A_Band A	Heat shock protein HSP 90-beta	5	NOT IN CONTROL IP
ZC3H11A_Band A	Pre-mRNA-splicing factor SYF1	5	NOT IN CONTROL IP
ZC3H11A_Band A	X-ray repair cross-complementing protein 5	5	NOT IN CONTROL IP
ZC3H11A_Band A	Isoform 1 of Heat shock protein HSP 90-alpha	4	NOT IN CONTROL IP
ZC3H11A_Band A	Junction plakoglobin	4	2
ZC3H11A_Band A	Scaffold attachment factor B1	4	NOT IN CONTROL IP
ZC3H11A_Band A	WD repeat-containing protein 43	4	NOT IN CONTROL IP
ZC3H11A_Band A	cDNA FLJ45706 fis, clone FEBRA2028457, highly similar to Nucleolin	3	NOT IN CONTROL IP
ZC3H11A_Band A	DNA topoisomerase 1	3	NOT IN CONTROL IP
ZC3H11A_Band A	Isoform 1 of THO complex subunit 1	3	NOT IN CONTROL IP
ZC3H11A_Band A	Probable ATP-dependent RNA helicase DDX27	3	NOT IN CONTROL IP
ZC3H11A_Band A	DNA replication licensing factor MCM7 isoform 2	2	NOT IN CONTROL IP
ZC3H11A_Band A	DNA topoisomerase 2	2	NOT IN CONTROL IP
ZC3H11A_Band A	FACT complex subunit SPT16	2	NOT IN CONTROL IP
ZC3H11A_Band A	Histone H2A.V	2	NOT IN CONTROL IP
ZC3H11A_Band A	Isoform 3 of Zinc finger MYM-type protein 4	2	NOT IN CONTROL IP
ZC3H11A_Band A	N-acetyltransferase 10	2	NOT IN CONTROL IP
ZC3H11A_Band A	apoptotic chromatin condensation inducer in the nucleus isoform 3	1	NOT IN CONTROL IP
ZC3H11A_Band A	Histone H2B type 1-L	1	NOT IN CONTROL IP
ZC3H11A_Band A	Histone H3.2	1	NOT IN CONTROL IP
ZC3H11A_Band A	Hornerin	1	0.25
ZC3H11A_Band A	Splicing factor 3B subunit 1	1	NOT IN CONTROL IP
ZC3H11A_Band A	Thyroid hormone receptor-associated protein 3	1	NOT IN CONTROL IP