

H3K4me3_ Cell Signaling _Part: 9751 _Lot: 14 _WB_PchAb 1421

Test Date_User 1-4-22_RI

Protein Load:

Panel A

1-Novex ps protein standard 10ul
2-K562 ab7911 15ug

Primary antibody:

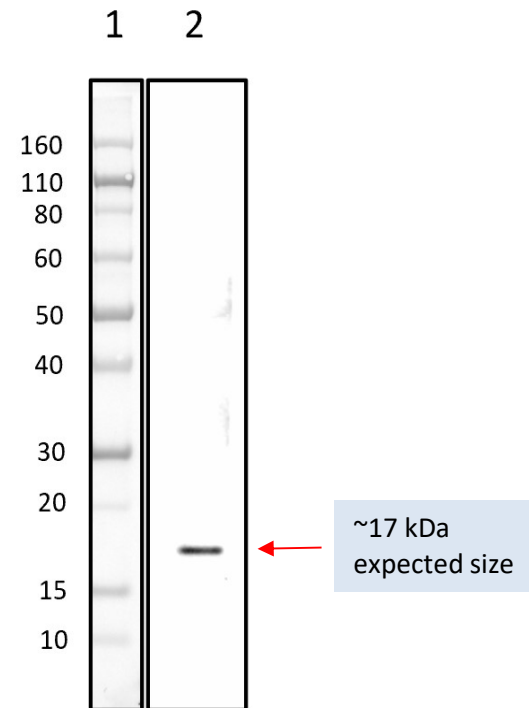
Panel A

Epitope: H3K4me3
Vendor: Cell Signaling
Part number: 9751
Lot number: 14
Primary ab dilution: 1:1000
Incubation: O/N at 4C

Secondary antibody:

Vendor: Abcam
Part number: ab6721
Lot number: GR119224-3
Secondary ab dilution: 1:40000
Incubation: 1 hr@ RT

Protein Standard Novex ps protein standard 10ul



Gel and Blot Conditions:

4-12% Bis-Tris, 1X MES running buffer iBlot transfer, nitrocellulose, P3 for 7'

Blocked in TBS-T w/5% NFDM for 1hr @ RT

Antibodies diluted in TBS-T w/5% BSA , Super Signal West Femto ECL detection, Visualized in ChemiDoc